

Profile

LusoCAD 2024

Seamless Experience with High Compatibility

With accelerated performance, enhanced compatibility and elevated user experience, LusoCAD 2024 takes design productivity to new heights.

Experience optimized speed and quality when working with large files, enjoy expanded compatibility with support for more file formats and APIs, and discover a new level of design satisfaction with the upgraded Dynamic Input tool and adjustable viewports, etc. Join us and take a look at the exciting features of LusoCAD 2024.

Advantages

Better Performance

With advanced technology and optimized algorithms, LusoCAD ensures you faster processing speed. Our efficient multi-core processing provides smoother handling of complex drawings, reducing lag and enhancing user experience. With our constant improvement, the performance of LusoCAD 2024 is now even more extraordinary.



Perfect Compatibility

LusoCAD delivers high compatibility with ACAD and provides robust APIs. The seamless data format, familiar interface, command structure and user operating habit ensure easy transition, while the powerful APIs allow for extensive customization and automation, empowering you to tailor the software to your specific needs.



Innovative Tools

Other than a comprehensive set of commands that you need, LusoCAD also offers over 100 unique and innovative tools like "Collaboration", "AreaTable", "Auto Layer", "Viewport to Layout", "AutoxIstable". They are adopted to significantly speed up your drafting speed.



Flexible Licensing

LusoCAD licensing policy is flexible and simple. We provide both perpetual license and subscription. You are free to choose the license mode and you decide whenever you want to upgrade.

	Standalone	Standalone	Network	Network
	License-key Serial number	USB-key Dongle	License-key Serial number	USB-key Dongle
Perpetual license	✓	✓	✓	✓
Rental license	✓	✗	✓	✗
License borrowing	✗	✗	✓	✗
Connection to license server	✗	✗	✓	✓

What's new in LusoCAD 2024

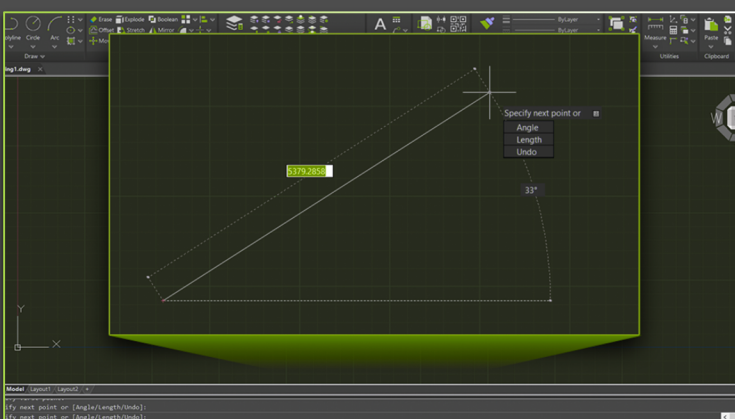
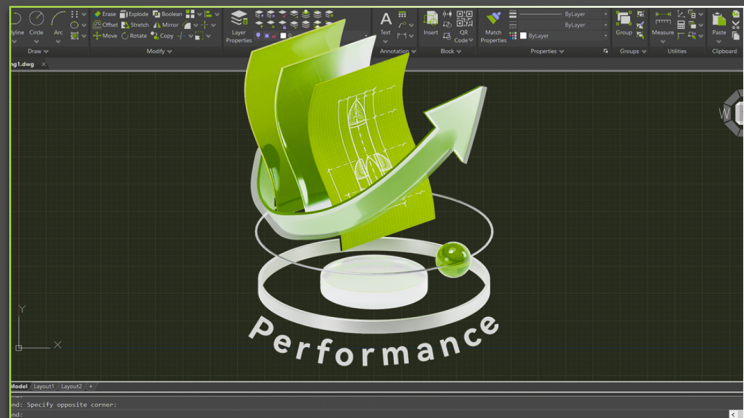
Elevate your CAD productivity to new heights with LusoCAD 2024, delivering accelerated performance, enhanced compatibility, and better user experience.

Improvements

Performance

The stability and performance have significantly improved in LusoCAD 2024, enhancing your design workflow.

The speed of opening and attaching of large raster images are faster and smoother with high quality, hatch preview remains quick and real-time even in complex drawings, what's more, lineweight display is also optimized with better transparency and performance.



Dynamic Input

Adds Dimension Input, vertical Dynamic Prompts list and separates Pointer Input boxes to provide easier-to-use experience and improve design efficiency.

API (GRX/VBA/LISP/.NET/COM)

■ .NET

With 100% integrity in core module interfaces that are most commonly used, LusoCAD 2024 ensures efficient development and seamless cross-platform compatibility.

■ LISP

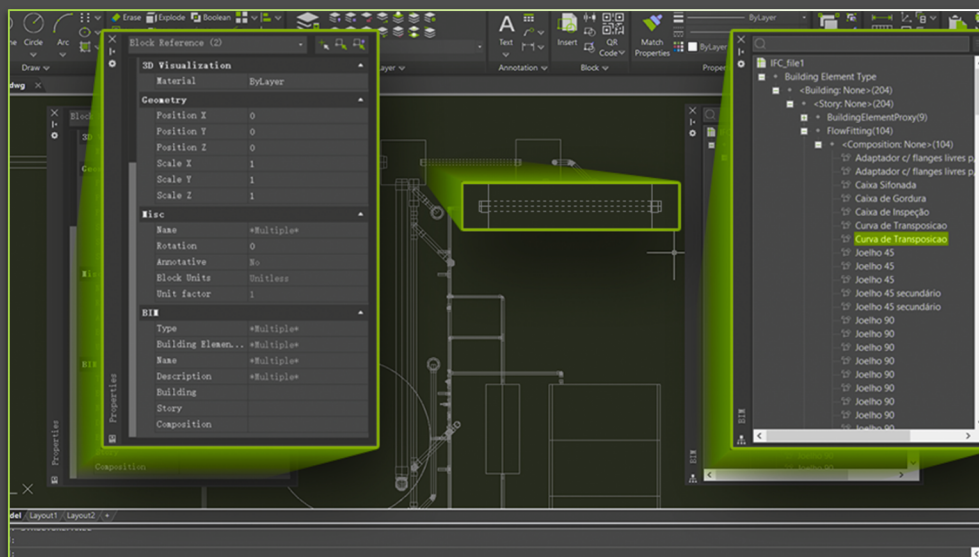
Encoding format of the LISP module has been optimized and adjusted to ensure complete compatibility with ANSI, UTF-8, UTF-16, UTF-8 BOM, and other encoding formats used in LISP, FAS, VLX, and DCL files, enabling efficient and seamless secondary development.



New Features

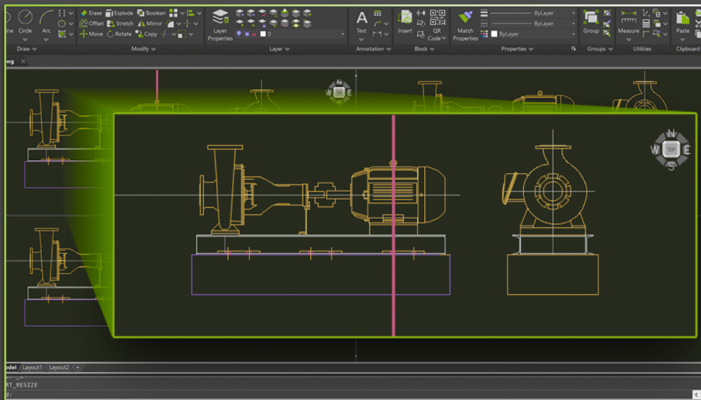
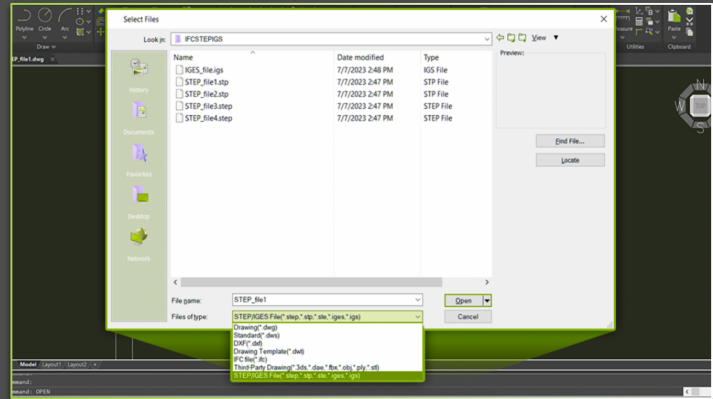
BIM Support

IFC files can be imported with complete BIM data in LusoCAD 2024, shown in Properties Panel, entities can also be managed in IFC Structure Panel.



STEP/IGES Files Import

Supports STEP and IGES files, which enables convenient exchange of 3D CAD data between different software platforms.

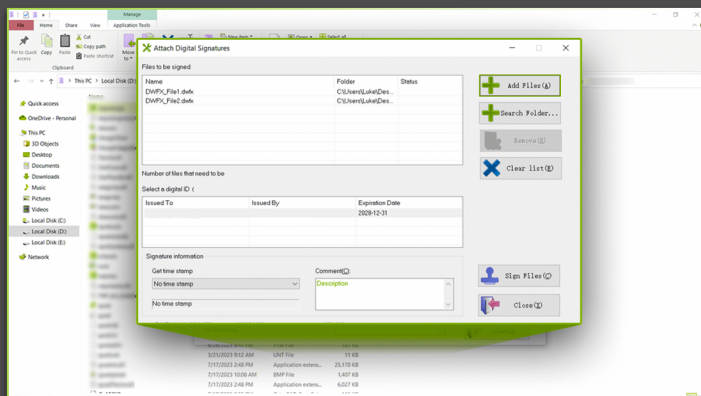
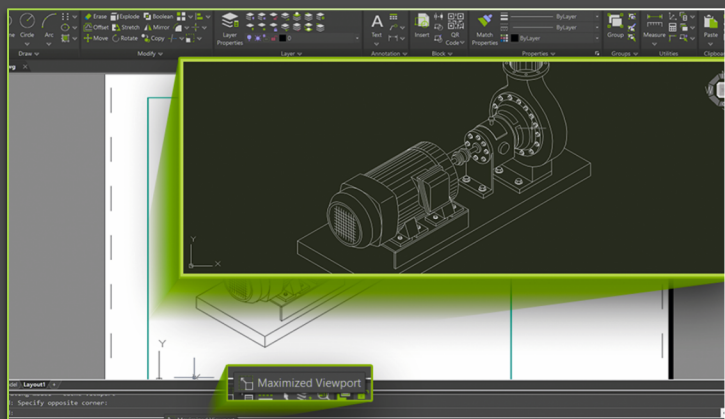


Viewports Edit

You can add, merge and adjust viewports by simply holding and dragging the border of viewports with your mouse cursor, making it easier to use.

VPMAX/VPMIN

VPMAX allows you to expand the current layout viewports and switch to Model Space for editing without worrying about messing up viewports' scales and limits. VPMIN allows you to restore the current layout viewport.



DWFX Batch Digital Signing Tool

By using an independent batch Digital Signing tool, you can sign DWFX, DWG, DWT and other files in bulk with digital signatures efficiently.

More about LusoCAD

Comprehensive Drafting Ability

LusoCAD provides precise and efficient tools for 2D drafting and 3D modeling, empowering users to bring ideas to life effortlessly.

- Object Snap
- Dimension tools
- Annotation Scale
- Revision Cloud
- Multileader
- Solid Editing
- 3D orbit options
- Visual Styles
- 3D Face & Mesh Modeling
- 2D Profiles and Sections



Efficient File Management & Printing

LusoCAD excels in file management with high compatibility, along with high-quality print capabilities, ensuring precision in every output.

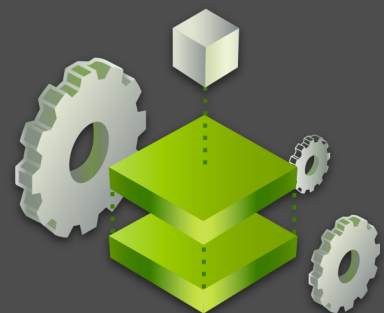
- My Cloud (Cloud Storage)
- PDF/DGN/DWF Underlay
- Drawing Compare & Graphic Compare
- Drawing Lock
- Batch Purge
- Batch Print
- Import & Export
- Barcode
- QR Code



Flexible Customization

LusoCAD empowers users to personalize LusoCAD with flexible tools and robust APIs. From the interface and shortcuts to the software's behavior, everything could be tailored according to your needs, making sure an efficient CAD.

- Quick Access Custom
- User Interface Custom
- Command aliases
- Shortcuts Custom
- ObjectGRX
- .NET Framework
- VLISP Editor
- VBA Macro



www.luso-cad.com

Paseo de la Habana, n° 41
Planta Calle, 28036 Madrid, España

+34 66 972 52 57

general@luso-cad.es

Rua Latino Coelho, n°87
1050 - 134, Lisboa, Portugal

+351 211 957 023

geral@luso-cad.pt